

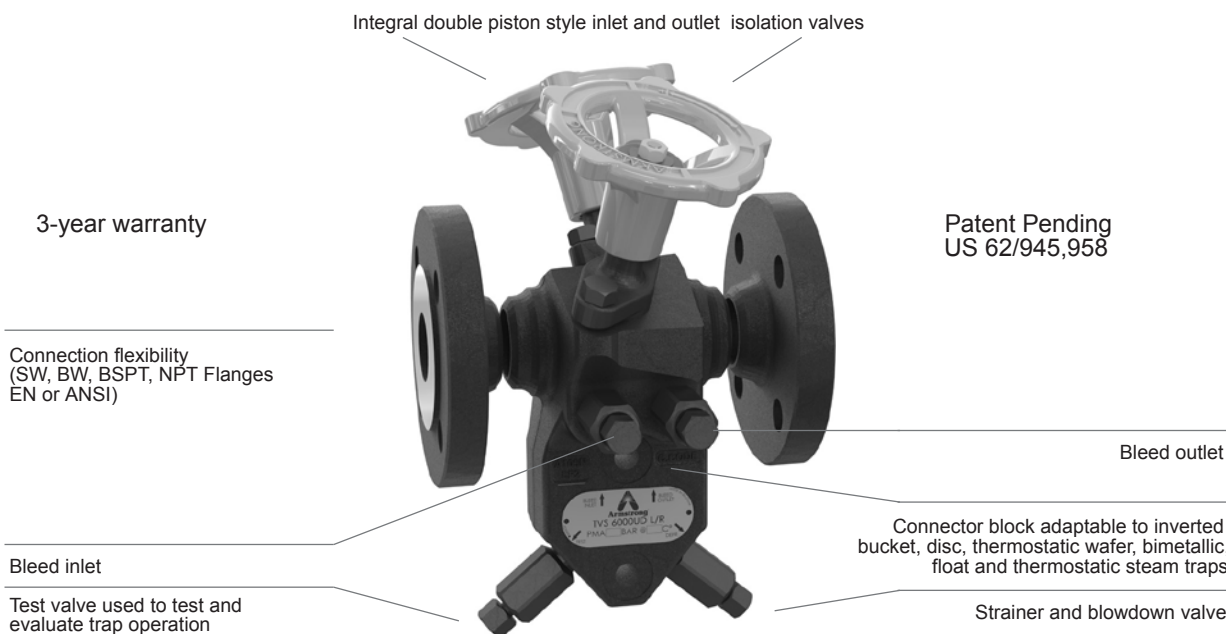


# TVS 6000UD Forged Steel Trap Valve Station

Compact double isolation and bleed concept  
(Up and Downstream) with 360° Connector



For pressures up to 650 psig (45 barg)...Capacities to 1300 lb/hr (590 kg/h) Using 2000 Series IB Steam Traps



### Description

This original concept has been developed to meet new demanding requirements regarding safety when operating steam equipments such as steam traps, in various industrial environments. TVS 6000UD is a compact double isolation and bleed concept (up and downstream) with a 360° connector.

TVS 6000UD provides double isolation inlet and outlet piston valves, bleed of inlet/outlet valves, a test valve, a strainer and a blowdown valve at trap inlet all merged together in a single compact 2-bolts universal connector. The TVS 6000UD's design ensures increased safety while saving space, time and cost.

This TVS 6000UD is covered by a three-year-warranty. The TVS 6000UD can be fitted with steam traps of different technologies (thermodynamic, thermostatic, float and thermostatic or feely floating. Please refer to specific steam trap capacity charts).

### Connections

Screwed BSPT and NPT  
Socketweld and Butt weld  
Flanged EN1092-1 PN40 or ASME B16.5

### Materials – TVS 6000UD Connector

Connector: ASTM A350 LF2  
Test valve: ASTM A582 T303 – Nitronic 60  
Blowdown valve: ASTM A582 T303 – Nitronic 60  
Depressurising valve: ASTM A582 T303 – Nitronic 60  
Flanges: P250GJ (other material on request)

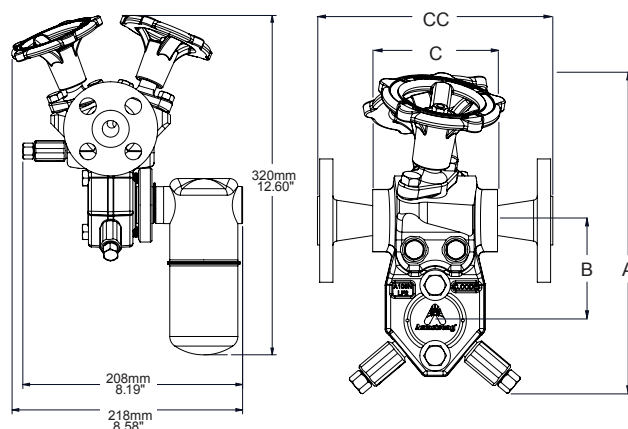
### Isolation Valve Components

Valve Sealing Rings: Graphite and Stainless Steel  
Bonnet: ASTM A350 LF2  
Bonnet Bolting: DIN933 8.8  
Stem and washers: ASTM A564 17-4 H900  
Lantern bushings: ASTM A582 T304  
Valve washer: ASTM A582 T304  
Disc springs: AISI T301  
Nut: AISI T304  
Handwheel: Ductile Iron

Flow Direction  
Left to Right (L/R)  
Right to Left (R/L)

Table ST-2-1. TVS 6000UD Compact double isolation and bleed

	in	mm	in	mm	in	mm
Connection Size	1/2	15	3/4	20	1	25
"A" valve closed	9	230	9	230	9	230
"A" valve open	9 13/16	250	9 13/16	250	9 13/16	250
"B"	2 13/16	72	2 13/16	72	2 13/16	72
"C" Face-to-Face (screwed, SW & BW)	3 15/16	100	3 15/16	100	3 15/16	100
"CC" Face-to-Face (flanged EN1092-1 PN40)	5 7/8	150	5 7/8	150	6 1/4	160
"CC" Face-to-Face (flanged ASME B16.5 #150)	6 11/16	170	6 3/4	172	7	179
"CC" Face-to-Face (flanged ASME B16.5 #300)	7	179	7 1/8	182	7 1/2	192
Weight in lb (kg) (screwed, SW & BW)	11.4 (5.2)		11.4 (5.2)		11.4 (5.2)	
Weight in lb (kg) (flanged EN1092-1 PN40)	15.2 (6.9)		16.5 (7.5)		17.4 (7.9)	
Maximum Allowable Pressure <sup>†</sup>	45 barg @ 315 °C		653 psig @ 599 °F			
Maximum Hydrotest Temperature	599 °F / 315 °C					
Maximum Hydrotest Pressure	986 psig / 68 barg					



† May be derated depending on flange rating and type.

Designs, materials, weights and performance ratings are approximate and subject to change without notice. Visit [armstronginternational.com](http://armstronginternational.com) for up-to-date information.





# TVS 6000UD Forged Steel Trap Valve Station

Compact double isolation and bleed concept  
(Up and Downstream) with 360° Connector



For pressures up to 650 psig (45 barg)...Capacities to 1300 lb/hr (590 kg/h) Using 2000 Series IB Steam Traps

Table ST-3-1. Model 2010 Capacity

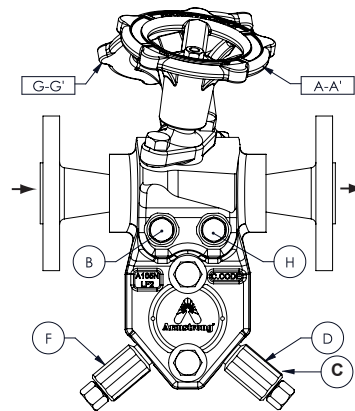
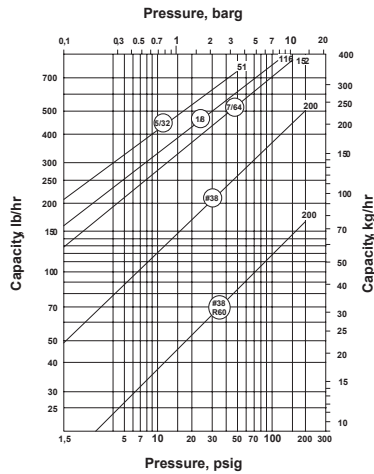
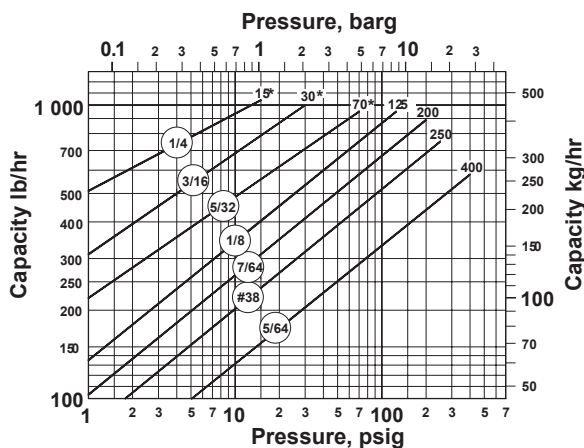
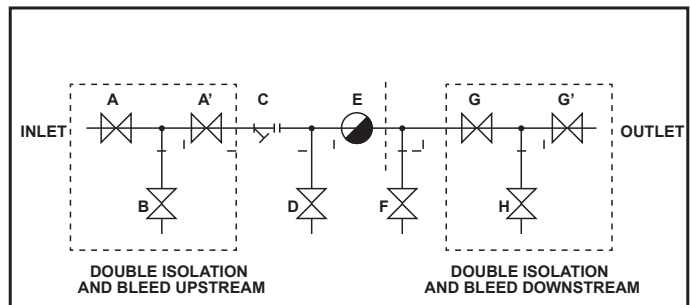


Table ST-3-2. Model 2011 Capacity



TVS 6000UD - L/R version



- A : INLET FIRST ISOLATION VALVE
- A' : INLET SECOND ISOLATION VALVE
- B : BLEED INLET
- C : STRAINER
- D : DEPRESSURIZING VALVE
- E : STEAM TRAP CONNECTION
- F : TEST VALVE
- G : OUTLET FIRST ISOLATION VALVE
- G' : OUTLET SECOND ISOLATION VALVE
- H : BLEED OUTLET

Table ST-3-3. Model 2022 Capacity

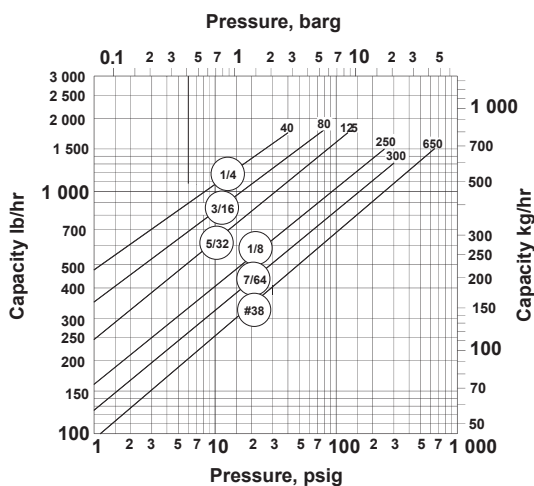


Table ST-3-4. How to Order

Model	Connection	Type of Connection	Flow Direction
TVS 6000UD	DN15 DN20 DN25	Flanges EN1092-1 & PN Class	L/R = Left to Right R/L = Right to Left
	1/2" 3/4" 1"	BSPT, NPT, SW, BW, Flanges ASME B16.5 & Class RF	

\* Capacities to be reduced by 5% for pressure below 5 bar (tested with Armstrong steam traps).