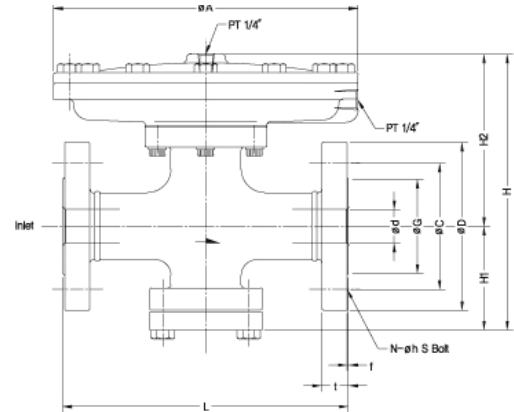
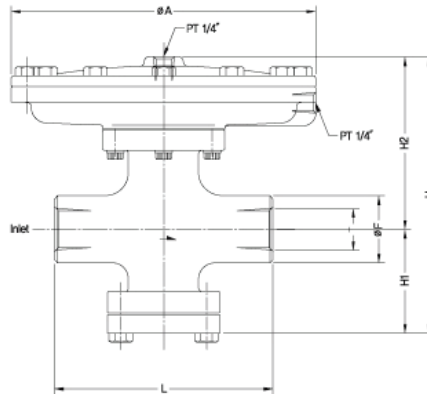


PRESSURE REGULATOR VALVE

Type SRV-1100S/F

Valas[®]

ALPHA GROUP



BODY
Stainless Steel (SCS13)

DIAPHRAGM
Made of PTFE for perfect sealing

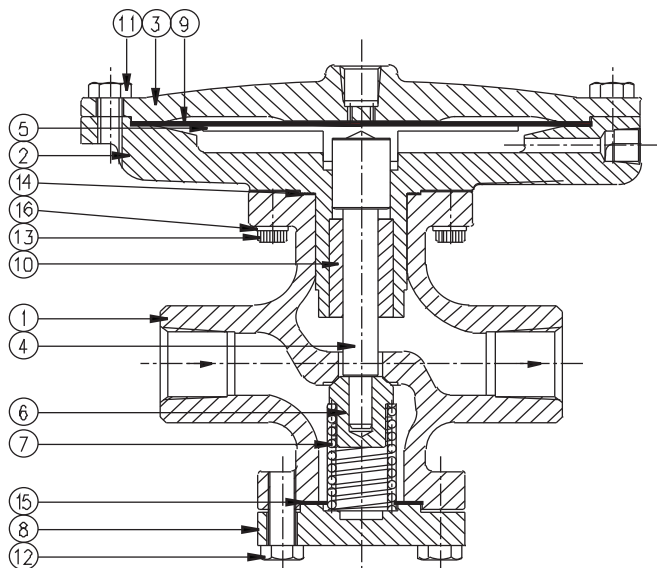
COVER & BOTTOM COVER
Designed to be easily disassembled and assembled

DISC
Contains carbon graphite for good hardness and longer lifetime

This is a regulating valve that controls pressure accurately and stably by operating the operation part with a little air pressure to control the 2nd side pressure and forming decompression proportion through return line connected to the 2nd side. Diaphragm built on the operation part reacts faster than the other bellows-type ones without any leakage, so that it works smoothly with long lifetime.

FLUID	INDUSTRIAL WATER	
Pressure	Max. 15 kg/cm ²	213psi
Temperature	Max. 230°C	446°F

VALVE SIZE	PORT	SCREW FLANGE		FLANGE SIZE												
T	d	F to F	F to F	F	A	H1	H2	H	D	C	G	t	f	N	h	S
1/2"	15	140	180	43	195	66	113	179	95	70	51	14	1	4	15	M12
3/4"	20	140	180	43	195	66	113	179	100	75	56	16	1	4	15	M12
1"	25	165	212	45	235	74	119	193	125	90	67	16	1	4	19	M16



VP3W-FR / VP3W-SR			
NO.	PART NAME	NO.	PART NAME
1	Body	10	Bush
2	Cylinder Cover	11	Bolts
3	Cover	12	Bolts
4	Diaphragm Rod	13	Bolts
5	Diaphragm Plate	14	Flange Packing
6	Disc	15	Gasket Packing
7	Spring	16	Spring Washer
8	Bottom Cover	17	Flange
9	Diaphragm		