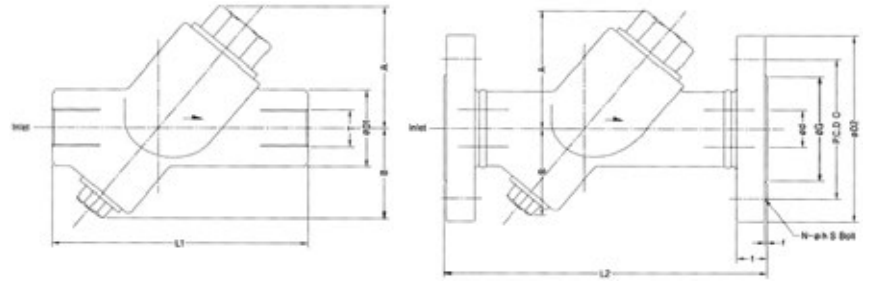
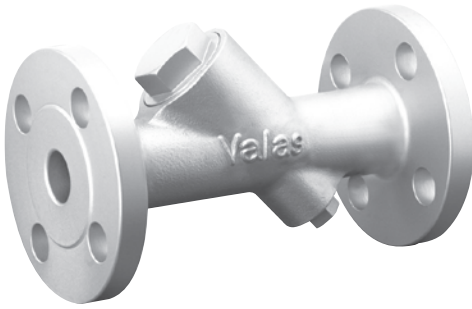


# LIFT CHECK VALVE

Type V353-F/S



**BODY**

Cast Stainless Steel (SCS13)

**DISC SEAT**

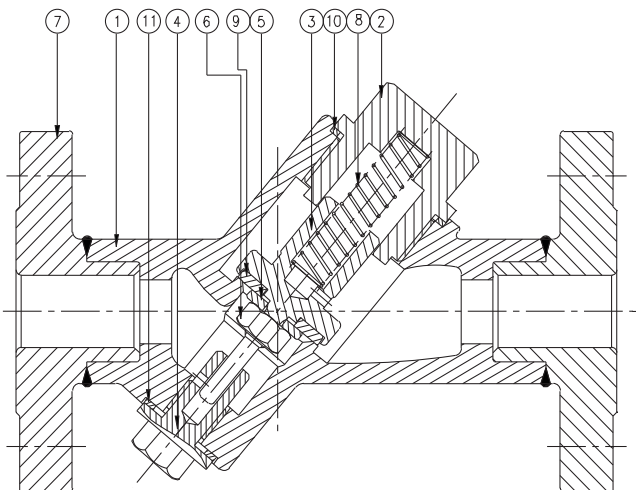
PTFE (Graphite-Reinforced)  
Composed of special carbon

Cover and Plug are designed in hexagonal type easy repair

This valve blocks liquid flowing conversely. This is used mainly when there is big pressure loss due to radical change of liquid flow. Lift type valve has only few defective riskd. Therefore, it has longer lifetime, is more stable, and leaks less than the other type of valves.

FLUID	STEAM, INDUSTRIAL WATER, AIR	
Pressure	Max. 15 kg/cm <sup>2</sup>	455 psi
Temperature	Max. 230°C	446°F
Operating Press	Min. 0.1 kg/cm <sup>2</sup>	1.4 psi
Mounting	Horizontal	

VALVE SIZE						FLANGE SIZE								
T	d	A	B	L1	L2	D1	D2	C	G	t	f	N	h	S
1/2"	15	51	38	92	152	30	95	70	51	14	1	4	15	M12
3/4"	20	58	45	110	178	40	100	75	56	16	1	4	15	M12
1"	25	68	47	132	203	45	125	90	67	16	1	4	19	M16
1 - 1/4"	32	80	52	145	220	62	135	100	76	18	2	4	19	M16
1 - 1/2"	40	85	58	177	225	62	140	105	81	18	2	4	19	M16



VP3W-FR / VP3W-SR			
NO.	PART NAME	NO.	PART NAME
1	Body	7	Spring
2	Cylinder Cover	8	Bottom Cover
3	Cover	9	Diaphragm
4	Diaphragm Rod	10	Bush
5	Diaphragm Plate	11	Bolts
6	Disc		