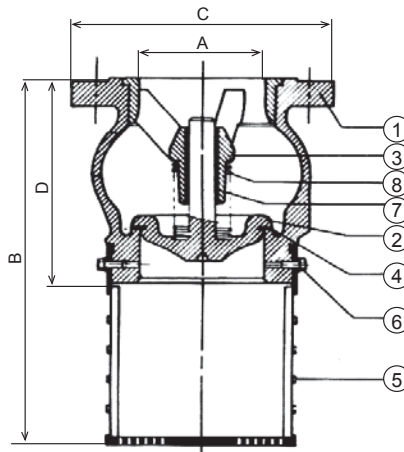


# FOOT VALVE WITH STRAINER

Type 302P



Cast iron PN 16 DN 50 - 100 16/10



## Technical Characteristics

- Operates in any position from horizontal to vertical ascending
- Minimum headloss
- Silent, reliable sealing, compact
- Exceptional robustness
- Does not generate hammering

## Description

- Closing system : Long back axial guiding for reduced displacement
- Sealing guaranteed by a flat seal
- Return spring

## Characteristics

Temperature IN °C	MIN.	-10°C
	MAX.	80°C
Pressure in bar	OPENING PRESSURE	See table
	SERVICE	16
	TESTING PRESSURE	25
Mediums	Clear liquids	
Headloss Chart	See overleaf	
Connections	PN 16 flanges drilled PN 10 - NFE 29206 - DIN 2501 - BS 4504	

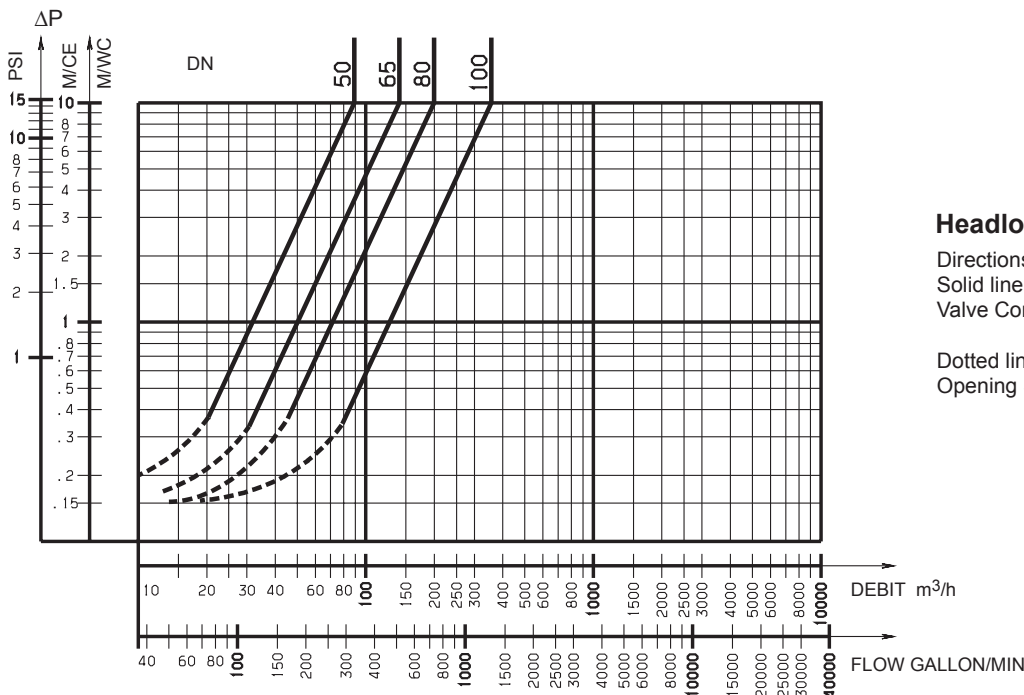
## References - Dimensions - Performances

Ref	A mm	B mm	C mm	D mm	Weight kg
2746	50	171	165	78	4.2
2747	65	214	185	125	6.2
2748	80	257	200	147	9
2749	100	313	220	176	13.2

## Nomenclature

Nb	Description	Qty	Materials	Afnor	DIN	BS	ANSI
1	Body	1	Cast Iron	FT25C	GG25	1 452 260	BA126 CL. B
2	Closing System	1	Cast Iron	FT25C	GG25	1 452 260	A126 CL. B
3	Guide	1	Cast Iron	FT25C	GG25	1 452 260	A126 CL. B
4	Seal	1	Nitrile NBR				
5	Strainer *	1	Lathene HD : P.E. Polyethylene				
6	Screw	2	Galvanized Steel				
7	Ring	1	Brass	CUZN39PB2	CUZN39PB	DCB3	B584587
8	Spring	1	Stainless Steel	Z10CN1809	14300	302525	AISI 302

\* Option : With Stainless Steel Strainer



## Headloss Chart

Directions for use :  
Solid line :  
Valve Completely Open

Dotted line :  
Opening Stage of Valve