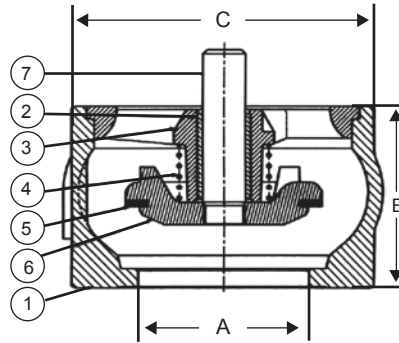


CHECK VALVE

Type 882

Wafer type ductile iron PN 40 DN 65 - 250 mm.



Applications and special features

- Operates in any position
- Minimum head loss
- Silent, reliable sealing, compact
- Exceptional robustness
- Does not generate hammering
- Closing system : Short back axial guiding for reduced displacement
- Sealing is ensured by a flat seal
- Return spring

Dimensions

DN	B	C				Weight
		PN10/16	PN25	PN40*	ASA150	
mm	mm					kg
65	75	126	126	126	121	2.7
80	85	142	142	142	-	4
100	105	162	170	170	170	6
125	90	194	194	194	194	7
150	106	218	222	222	222	11
200	140	273	-	-	273	22
200	140	-	285	-	-	22
200	140	-	-	289	-	22
250	200	-	339	-	-	47
250	200	328	-	352	328	47

* Note : Standard Stock

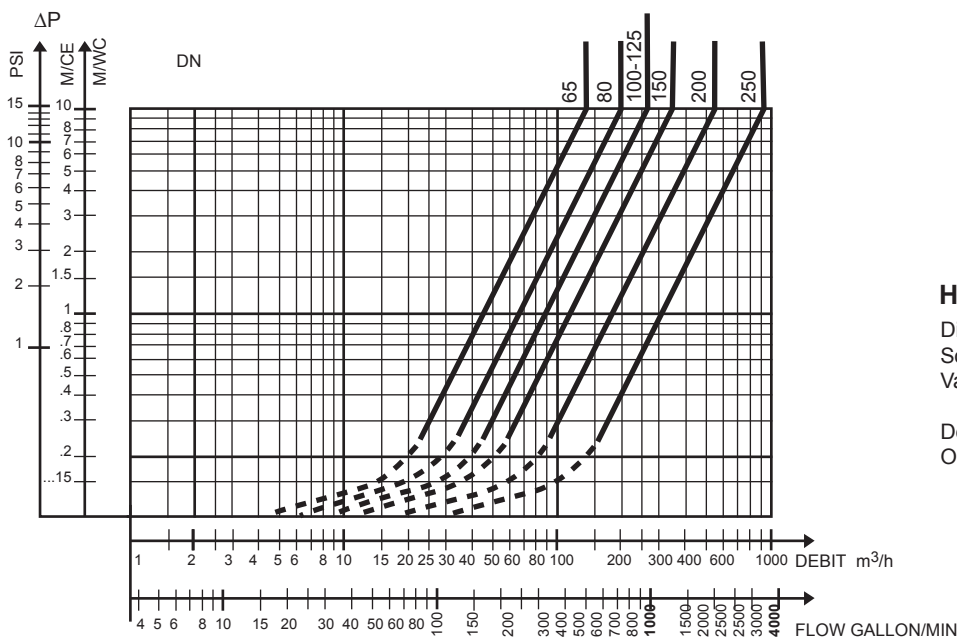
Spare parts list and materials

Nb	Description	Materials	EURO	ANSI
1	Casing	Cast iron+epoxy	EN-GJS-400.15	ASTM A 536 60-40-18
2	Ring	Bronze	CuSn 12	
3	Guide	Cast iron+epoxy	EN-GJL-250	ASTM A 48 35 B
4	Spring	Stainless steel	X10CrNi18-8	AISI 302
5	Seal	EPDM		
6	Closing system DN65	Bronze	Cu Sn 5 Zn 5 Pb5-C	ASTM B 505
	Other DN	Cast iron+epoxy	EN-GJL-250	ASTM A 48 35 B
7	Stem	Bronze	Cu Sn 5 Zn 5 Pb5-C	ASTM B 505

Characteristics

Temperature IN °C	Mini.	-10°C
	Maxi.	100°C
Pressure in bar	Opening Pressure	See the opening pressure table overleaf according to mounting position
	Service	40
	Testing Pressure	60
Mediums	Clear Liquids, dry clean air	
Headloss Chart	See Overleaf	
Connections	Mounting Between flanges, PN 10/16/25 & PN40* DIN 2501 BS 4504 ASAB 16 I class 125 FF	

* Note : Standard Stock



Headloss Chart

Direction for Use :
Solid line :
Valve completely open

Dotted line :
Opening stage of valve