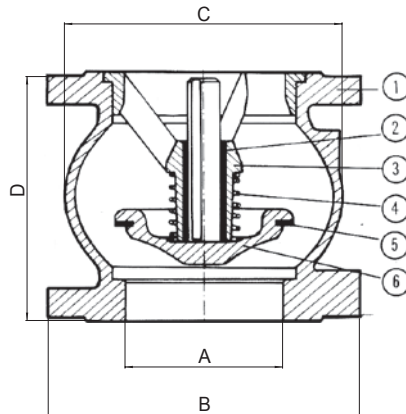


CHECK VALVE

Type 402

Cast Iron PN 16 ND 50 to 400 mm



Technical Characteristics

- Operates in any position
- Minimum headloss
- Silent, reliable sealing, compact
- Exceptional robustness
- Does not generate hammering

Description

- Closing system : Long back axial guiding for reduced displacement
- Sealing guaranteed by a flat seal
- Return spring

Characteristics

Temperature IN °C	MIN.	-10°C
	MAX. AT PEAK	110°C
Pressure in bars	OPENING PRESSURE	See Table
	SERVICE	16 bars
	TESTING PRESSURE	25 bars
Mediums	Clear liquids - Gas	
Headloss Chart	See Overleaf	
Connections	PN 16 Flanges drilled PN 10 - ASA 150 - NFE 29206 - DIN 2501 - BS 4504	
Approvals	France : VERITAS - Denmark : VA	

References - Dimensions

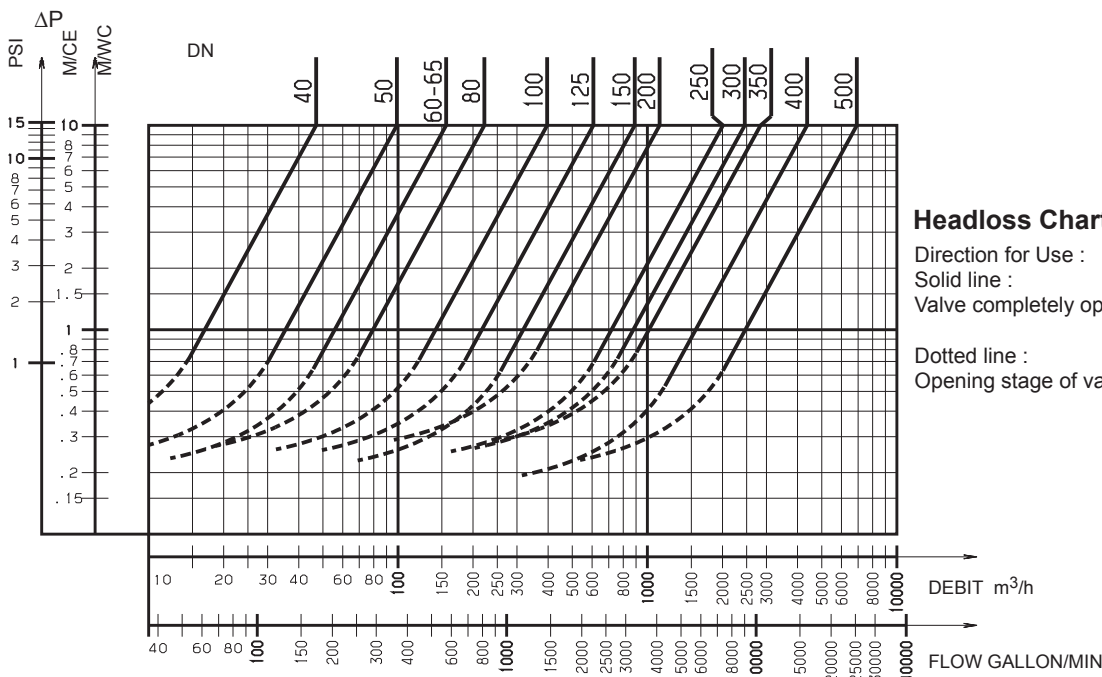
Ref.	ASA150	A	B	C	D	Weight	
16/10		inch	mm	mm	mm	kg	
2282	2338	2"	50	165	97	100	5.8
2283	2339	2 1/2"	65	185	125	120	8.1
2284	2340	3"	80	200	150	140	10.2
2285	2341	4"	100	220	187	170	14.5
2226	2243	5"	125	250	220	200	24
2227	2244	6"	150	285	260	230	32
2229	2246	8"	200	340	340	288	53
2230	2247	10"	250	405	420	354	94

Nomenclature

Nb	Description	Qt	Materials	Afnor	DIN	BS	ANSI
1	Casing	1	Cast Iron	FT25C	GG25	1 452 260	A126 CL.B
2	Ring	1	<100mm : brass >100mm : bronze	CUZn40Y30 CUSN12	G-CUZn40PB G-CUZn12	DCB3 PB2	B 584-857 4846 A
3	Guide	1	Cast Iron	FT25C	GG25	1 452 260	A126 CL.B
4	Spring	1	Stainless Steel	Z10CNI809	1-4300	302 S25	AISI 302
5	Seal	1	Nitrile : NBR Rubber				
6	Closing System	1	Cast Iron	FT25C	GG25	1 452 260	A126 CL.B

Opening Pressure in mm/WC

ND	↑	↓	→	↑ without spring
50	440	220	330	110
65	450	190	320	130
80	450	190	320	130
100	500	240	370	130
125	510	210	360	150
150	550	210	380	170
200	590	210	400	190
250	710	210	460	250



Headloss Chart

Direction for Use :
 Solid line :
 Valve completely open
 Dotted line :
 Opening stage of valve