

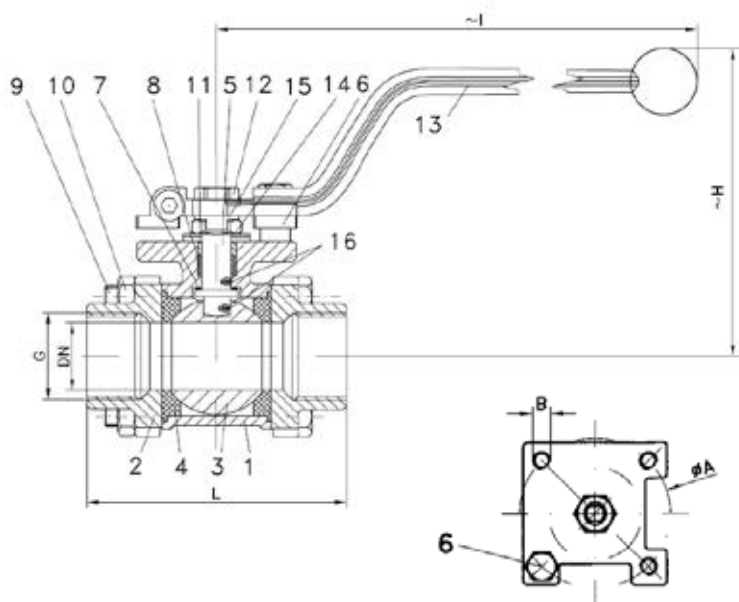


BALL VALVES RK-PROBALL

KH3T M (NC), 1/4" - 4", PN63/100



Three-piece ball valve, threaded ends. casting lever



Ball valve with threaded ends acc. to
EN 10226-1 / EN ISO 228-1
full bore

face to face acc. to DIN 3202-M3

Specification:

Three-piece ball valve, threaded ends acc. to
EN 10226-1 / EN ISO 228-1, face to face
dimensions acc. to DIN 3202-M3, full bore,
blow-out-proof stem, body material stainless
steel (1.4408) or steel (1.0619), antistatic
device, free of non ferrous metals, seat KFG,
stem packing KF, disc spring loaded adjustable,
top flange DIN EN ISO 5211, approved
by PED, certified acc. to GERMAN clean air
act VDI 2440, with lever.

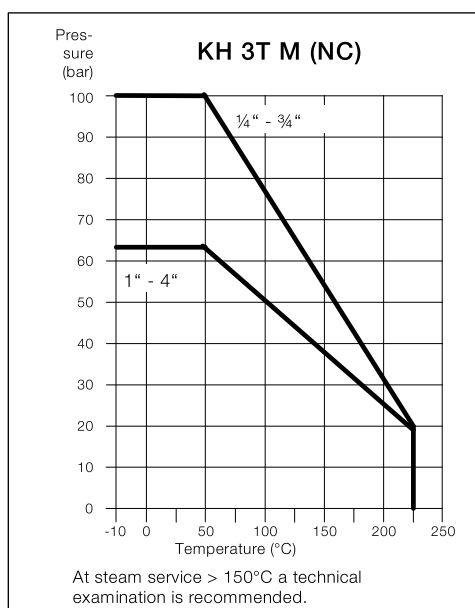
Marking: RK-Proball

Types: KH 3T M (NC)-1.0619

KH 3T M (NC)-1.4408

Ball valves RK-Proball KH 3T all sizes are also available with pneumatical,
electrical or hydraulic actuators.

No.	Part	Material	Material
1	body	1.0619	1.4408
2	cap	1.0619	1.4408
3	ball	1.4408	
4	seat	KFG	
5	stem	1.4401	
6	stop pin	1.4301	
7	washer	KFG	
8	stem packing	KF	
9	hex. screw	A2-70	
10	hex. nut	A2-70	
11	thrust washer	1.4301	
12	hex. nut	A2-70	
13	lever	1.4301	
14	plate spring	1.4310	
15	locking plate	1.4301	
16	antistatic element	1.4401	



Ordering example:

KH 3T M (NC), 2", PN 63, 1.4408

Dimensions

DN mm	G inch	PN	dimensions (mm)			top flange ISO 5211			Kv-value m³/h	torque Nm	weight kg
			H	I	L		Ø A	B			
10.6	1/4	100	72	154	50	F03	36	M5	6	3	0.5
12.7	3/8	100	72	154	60	F03	36	M5	7	3	0.5
15	1/2	100	86	169	75	F04	42	M5	10	5	0.7
20	3/4	100	93	169	80	F04	42	M5	25	10	0.9
25	1	63	105	222	90	F05	50	M6	35	11	1.3
32	1 1/4	63	110	222	110	F05	50	M6	46	20	2.2
38	1 1/2	63	124	222	120	F05	50	M6	80	26	2.8
49	2	63	146	304	140	F07	70	M8	110	30	4.4
65	2 1/2	63	170	304	185	F07	70	M8	310	70	9.8
80	3	63	176	354	205	F10	102	M10	360	90	14.8
100	4	63	207	354	240	F10	102	M10	820	120	25.4

