

# Pressure Gauge

Pressure measurement technology



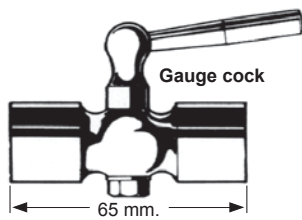
**Application :**

Robust heavy duty pressure gauges for general applications.

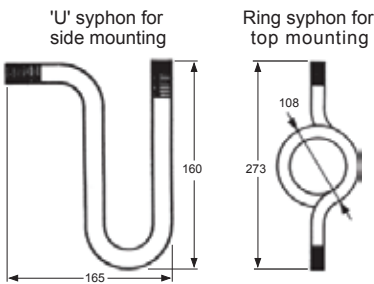
- For steam, air, water, oil etc.
- Direct mounting, 1/4", 3/8", 1/2" BSP.
- 2 1/2"(63mm), 4"(100mm). diameter dial.
- Dual graduations, bar and psi.
- Phosphor bronze Bourdon tube.
- Steel case, SS304 case, finished stone grey.

**Pressure ranges:**

- 0 - 2.5 bar (0 - 36 psi)
- 0 - 4 bar (0 - 58 psi)
- 0 - 6 bar (0 - 86 psi)
- 0 - 10 bar (0 - 145 psi)
- 0 - 16 bar (0 - 230 psi)
- 0 - 25 bar (0 - 350 psi)
- 0 - 40 bar (0 - 580 psi)



**Gauge cock**  
For isolating the pressure gauge.  
Brass plug cock with ends screwed 3/8" BSP female.



**Syphon tubes**  
Recommended for steam and condensate systems, to prevent oscillation of the gauge. May also be used for other media. Mild steel, screwed 3/8", 1/2" BSP complete with 2 locknuts.



**Ball Valve**  
For isolating the pressure gauge.  
Ball valve SS316 with ends screwed 1/4", 3/8", 1/2" BSP female.



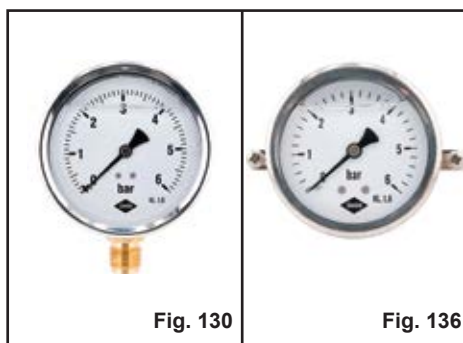
**Case** : Steel Galvanised, SS304  
**Bourdon Tube** : Copper Alloy  
**Movement** : Brass  
**Position** : Bottom(Fig.1), Back (Fig.102)  
**Thread, BSP** : 1/4"  
**Dial Diameter** : 63 mm

\* Fig. 102 with narrow fronting and back clamp fixing  
\* Filled : Dry (No filled)



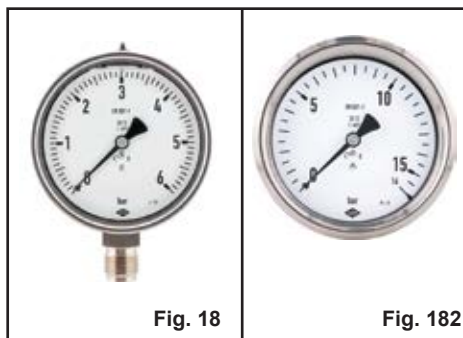
**Case** : Steel Galvanised, SS304  
**Bourdon Tube** : Copper Alloy  
**Movement** : Brass  
**Position** : Bottom  
**Thread, BSP** : 3/8", 1/2"  
**Dial Diameter** : 100 mm

\* Filled : Dry (No filled)



**Case** : All Stainless Steel 304  
**Bourdon Tube** : Stainless Steel 316  
**Movement** : Stainless Steel 316  
**Position** : Bottom, Back  
**Thread, BSP** : 1/4", 1/2"  
**Dial Diameter** : 63 mm and 100 mm

\* Fig. 136 with narrow fronting and back clamp fixing  
\* Filled : Glycerine Filled



**Case** : All Stainless Steel 304  
**Bourdon Tube** : Stainless Steel 316  
**Movement** : Stainless Steel 316  
**Position** : Bottom, Back  
**Thread, BSP** : 1/4", 1/2"  
**Dial Diameter** : 63 mm and 100 mm

\* Fig. 182 Position : Back and with narrow fronting and back clamp fixing  
\* Filled : Glycerine Filled or Dry (No filled)