

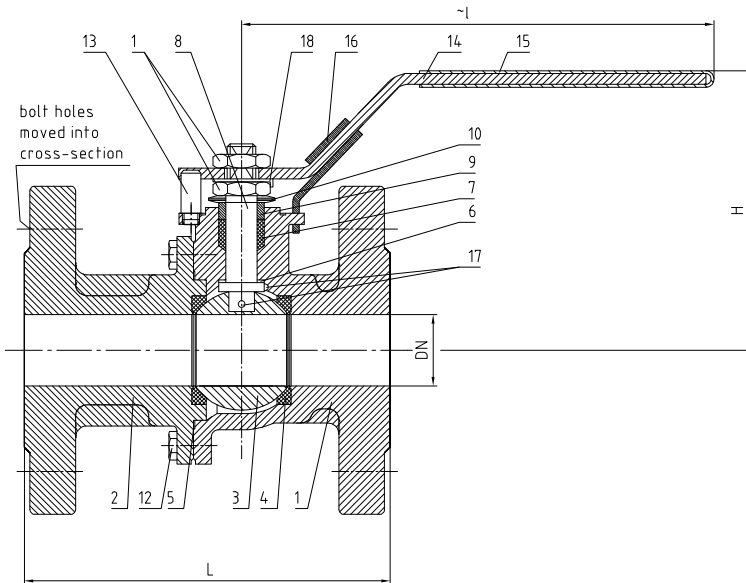


# BALL VALVES RK-PROBALL

## KH 2T F-FS, DN15 - DN100, PN16/40



### Two-piece ball valve, flange connection.



Ball valves RK-Proball KH 2T F of all sizes are also available with pneumatical, electrical or hydraulic actuators.

No.	Part	Material	Material
1	body	1.0619	1.4408
2	cap	1.0619	1.4408
3	ball		1.4408
4	seat		KFM
5	seal		Graphite
6	thrust washer		KFCM
7	stem packing		Graphite
8	stem		1.4401
9	ring		1.4401
10	belleville washer		1.4310
11	nut		1.4301
12	screw		A4-70
12.1	stud bolt, GR.27		A4-70
12.2	nut, GR.27		A4-70
13	stop pin		1.4301
14	lever		1.4301
15	insulation cover		Vinyl
16	spring locking device*		1.4301
17	antistatic element		1.4401
18	locking washer		1.4301

\* special type

#### Dimensions

DN mm	DN Zoll	PN	dimensions (mm)				top flange ISO	torque Nm**	weight kg	
			H	I	L GR.1	L GR.27			GR.1	GR.27
15	1/2"	40	86	165	130	115	F04	6	2.4	2.3
20	3/4"	40	92	165	150	120	F04	10	3.2	3.1
25	1"	40	106	176	160	125	F05	14	4.6	4.3
32	1 1/4"	40	114	215	180	130	F05	22	6.5	6.0
40	1 1/2"	40	116	215	200	140	F05	30	7.5	7.0
50	2"	40	136	278	230	150	F07	41	12.3	11.4
65	2 1/2"	40	150	278	290	170	F07	65	17.0	15.2
65	2 1/2"	16	150	278	290	170	F07	65	15.7	14.1
80	3"	40	185	375	310	180	F10	94	24.1	22.0
80	3"	16	185	375	310	180	F10	94	22.9	20.5
100	4"	40	200	375	350	190	F10	130	32.9	29.8
100	4"	16	200	375	350	190	F10	130	30.0	26.2

\*\*Necessary torque measured with treated water at Δ P acc. to pressure 16 bar and room temperature

#### Flanged ball valve full bore

face to face acc. to 558, GR.1  
face to face acc. to 558, GR.27  
flanges acc. to EN 1092

#### Specification:

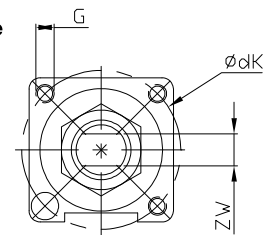
Two-piece ball valve, flanges acc. to EN 1092, face to face dimensions acc. to EN 558, GR.1/GR.27, full bore, blow-outproof stem, body material stainless steel (1.4408) or steel (1.0619), antistatic device, free of non ferrous metals, seat KFM, stem packing graphite, disc spring loaded adjustable, top flange DIN EN ISO 5211, approved by PED, certified acc. to GERMAN clean air act VDI 2440, Fire-Safe acc. to API 607, safety spring locking device is optional.

Marking: RK-Proball

Types: KH 2T F-FS-1.0619

KH 2T F-FS-1.4408

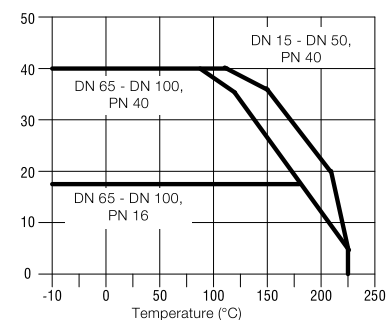
#### Top flange



DN (mm)	Ø dk	G	ZW
15	42 x	M 5 x 0.8	8
20	42 x	M 5 x 0.8	8
25	50 x	M 6 x 1.0	10
32	50 x	M 6 x 1.0	10
40	50 x	M 6 x 1.0	10
50	70 x	M 8 x 1.25	14
65	70 x	M 8 x 1.25	14
80	102 x	M 10 x 1.5	19
100	102 x	M 10 x 1.5	19

Pres-  
sure  
(bar)

#### KH 2T F-FS



At steam service >150°C a technical examination is recommended.

#### Ordering example:

**KH 2T F-FS, DN 65, PN 16, GR.1, 1.4408, safety spring locking device**

