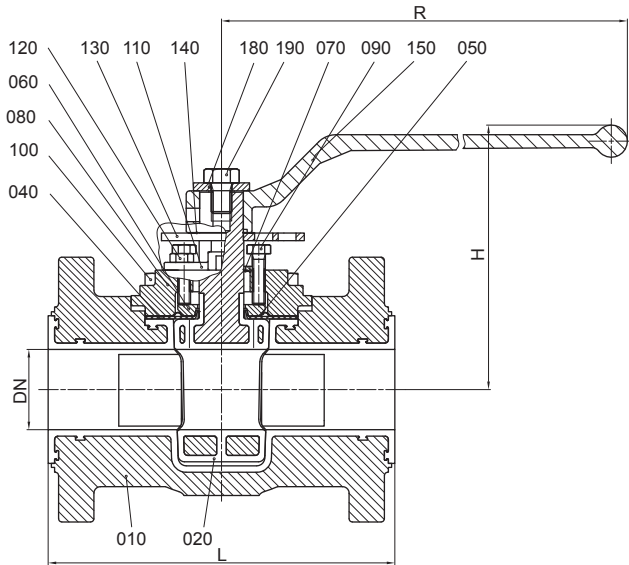
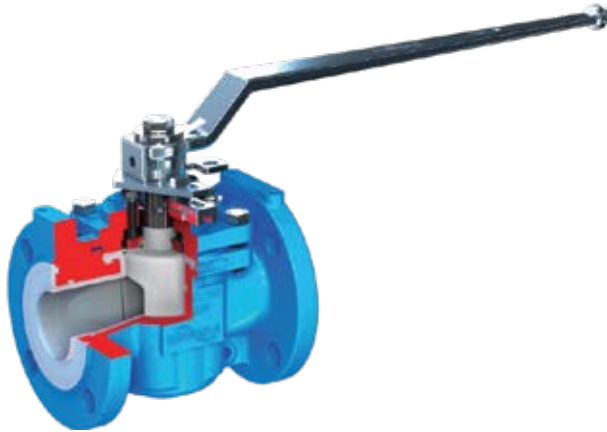


Durco®

Lined Plug Valve

Type T4E3



Flange Connections

ANSI B 16 5, 150lbs

The T4E series is designed and developed with the latest technology and therefore very suitable for the chemical process industries and available in the ANSI Class 150 & 300 as well DIN Class PN16 and a max. temperature of 204°C. The T4E lined plug valves provide maximum corrosion resistance and the elimination of product contamination at reasonable costs.

PFA body liner is well anchored against the body by mean of machined and cast T-slots and the solid encapsulated/anchored PFA-plug liner material ensures a strong adhesion. This makes the T4E series so suitable for extreme service and vacuum conditions.

A large sealing surface guarantees a bubble-tight shut-off.

A secondary dynamic self adjusting, self-energized PFA* reverse lip diaphragm prevents stem leakage.

You never replace valve seats; you only reseal the plug with a quick and easy in-line adjustment.

Standard material of construction is Ductil Cast Iron, however, stainless steel valve bodies can be make available upon request.

*Optional stainless steel diaphragm support.

Dimensions - mm.

| Size | ANSI | L | H | R | Weight (kg) |
|------|------|-------|-----|-----|-------------|
| ½" | 300# | 139.5 | 139 | 260 | 4.6 |
| ¾" | 300# | 152.5 | 139 | 260 | 5.6 |
| 1" | 300# | 165 | 139 | 260 | 6.5 |
| 1½" | 300# | 190.5 | 145 | 260 | 10.1 |
| 2" | 300# | 216 | 165 | 410 | 14.0 |
| 3" | 300# | 282.5 | 179 | 410 | 23.7 |
| 4" | 300# | 305 | 222 | 674 | 42.4 |
| 6" | 300# | 403.5 | - | - | 69.2 |

available in size ½" - 12"

Standard Material Specifications

| No. | Description | Material | No. | Description | Material |
|------|------------------|---|-----|----------------------|---|
| 010 | body | carbon steel | 100 | top cap bolt | ASTM A193 grade B7 |
| | | ASTM A216 grade WCB, PFA lined | 110 | stop | stainless steel ASTM A351/A744 grade CF-8M (316 SS) |
| 020 | plug | ductile cast iron (EN-JS1049/ASTM A395) PFA lined | 120 | stop fastener | stainless steel - 1.4301 |
| 040 | diaphragm | PFA | 130 | stop collar | carbon steel, protective plated |
| 050* | metal diaphragm | stainless steel - 302 | 140 | stop collar retainer | stainless steel - 302 |
| 060 | thrust gland | machining steel - 1.0718 | 150 | wrench | ductile cast iron (EN-JS1082/ASTM A536) |
| 070 | grounding spring | stainless steel - 302 | | | |
| 080 | top cap | duplex stainless steel ASTM A351 Gr CD4MCu | 180 | washer | stainless steel - 1.4301 |
| 090 | adjuster bolt | ASTM A193 grade B7 | 190 | hexagon bolt | stainless steel - 1.4301 |

* optional

