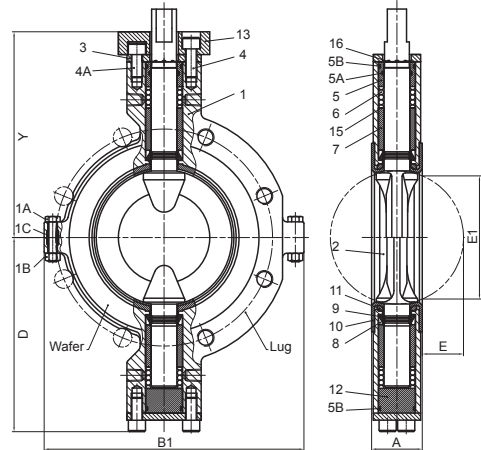


Durco® Lined Butterfly Valves Type BTV



How To Specify BTV Lined Butterfly Valves

Body Stem & Disc

Size Type Liner Style Materials Materials Operator Options

Valve Size

Selection Code	Selection Code	Selection Code	Selection Code	Selection Code	Selection Code	Selection Code	Selection Code
2 in (50 mm)	2	14 in (350 mm)	14				
3 in (80 mm)	3	16 in (400 mm)	16				
4 in (100 mm)	4	18 in (450 mm)	18				
5 in (125 mm)	5	20 in (500 mm)	20				
6 in (150 mm)	6	24 in (600 mm)	24				
8 in (200 mm)	8						
10 in (250 mm)	10						
12 in (300 mm)	12						

Type

Selection Code
Butterfly B

Liner Material

Selection Code
Sentinel™ (Durlon II) S
PTFE T
UHMWPE U

Body Style - 150# Split Body

Selection Code
Wafer W
Lug L

Body Material

Selection Code
DCI 4
D4 (A351 Gr CF8M) 1

Stem & Disc Material

Selection Code	Selection Code	Selection Code	Code
D100	0	DC3	6
316SS (D4)	1	TIP	7
D20	2	DCI/PFA	8
DM	3	UHMWPE	9
DC2	5	254 SMO†	9
Titanium	T	CD4M/PFA	B

Operator Options

Selection Code
10 Position Locking Lever 0
Enclosed Gear 1
Pad Lockable Gear 2
Bare Stem 9

Energizer Options

Selection Code
Silicone R
Viton Energizer & Seals* V
EPDM Energizer & Seals E

Other Options

Selection Code
DIN PN10 P1
DIN PN16 P6

Cleaning Options

Selection Code
Chlorine Cleaning (must use Viton Energizers) C
Oxygen Cleaning (cleaning specification number required) O

* = Recommended for Chlorine Services
† = Registered trademark of Avesta AB

Code Descriptions
2 = (2) purge ports 4 = (4) purge ports 5 = (1) lubrication port 6 = (2) lubrication ports

Example: 12-B T L 4 8 1-V- - -

12 in BTV-2000 butterfly valve with PTFE liner; lug design Class 150 drilling, ductile cast iron split body and PFA disc; enclosed gear operator; Viton energizer and seals; no additional options.

Materials Selection Chart	
D4 = ASTM A351/A744 Gr. CF8M (316 S.S.)	254 SMO = ASTM A744/A351 (CK-3MCuN)
D20 = ASTM A351/A744 Gr. CN-7M (Durimet 20)	Titanium = ASTM B367 Gr. C-2 ³
D100 = ASTM A351/A744 Gr. CD4MCu (Durcomet 100)	PFA = Perfluoroalkoxy polymer
DM = ASTM A494 Gr. M35-2 (Monel 400) ²	PTFE = Tetrafluorethylene polymer
DCI = ASTM A395 (Ductile Iron)	Sentinel = Modified fluoropolymer
DC2 = ASTM A494 Gr. N-7M (Chlorimet 2)	UHMWPE = Ultra high molecular weight polyethylene
DC3 = ASTM A494 Gr. CW-6M (Chlorimet 3)	TIP = ASTM B367 Gr. TiPd 8A ⁴

1. Registered trademark of Avesta AB
2. Registered trademark of the International Nickel Company, Inc.
3. Commercial Titanium
4. Palladium Stabilized Titanium

Face-to-Face Dimensions: DIN EN 558-2

SIZE	ANSI	BTW					B1	Weight (kg*)
		A	D	E	E1	Y		
2"	150#	42.8	125.4	9.9	45.8	151.8	152.4	6
3"	150#	46	137.3	17	65.7	160.5	200	8
4"	150#	52.3	162.7	25.2	88.5	173.4	222.2	10
5"	150#	56.3	203.2	34.9	112.7	215.9	247.7	12
6"	150#	56.3	215.9	47.2	140	228.6	276.2	13
8"	150#	60.3	239.7	68.2	187.5	251.9	364.4	17
10"	150#	68.2	302.4	92.1	243	311.5	441.3	40
12"	150#	78.5	328.6	112.7	293.7	337.7	487.4	52

until DN8"/DN200 with hand lever, from DN10"/DN600 with gear
* weight without hand lever or gear

Standard Material Specifications

No.	Description	Material
1	body	ductile cast iron (EN-JS1049/ASTM A395)
1A	body bolts	ASTM A193 Gr. B7
1B	body nuts	ASTM A194 Gr. 2H
1C	bushing	carbon steel
2	disc	ductile cast iron with PFA (EN-JS1049/ASTM A395)
3	retainer plate	zinc plated steel
4	retainer bolts	zinc plated steel
4A	retainer bolts	zinc plated steel
5	gland top	stainless steel - 304
5A	O-ring shaft	viton
5B	O-ring Cbore	viton
6	spring	stainless steel - 302
7	bearing	composite
8	gland seal	stainless steel - 302
9	seal	viton
10	liner	PTFE
11	seal seat	viton
12	gland bottom	stainless steel - 304
13	plate mounting	carbon steel
15	shim	stainless steel - 303*304(*if required)
16	grouding device	stainless steel - 302