



# CD-72S/SL Series Disc Trap

For Steam Service up to 1,010 psig (70 bar)...Capacities to 3,900 lb/hr (1,769 kg/hr)



The Armstrong CD-72S/SL is a disc style trap designed to control the trap's cycle rate. By reducing the cycle rate, the Armstrong CD-72S/SL will have a longer service life than typical disc traps. This enhanced performance will ensure that maintenance time is minimized and steam costs are greatly reduced.

The CD-72S/SL is designed with three discharge ports, which offer stable disc operation to extend trap operating life. The capacity of the Armstrong CD-72S/SL has been engineered specifically for the following applications: large steam main drips, process equipment, and HVAC heating equipment on constant pressure.

### Advantages

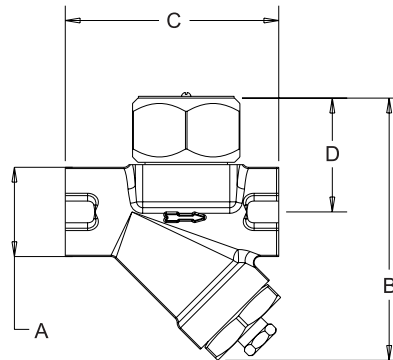
- Three discharge port design
- Minimum wear with controlled cycling
- Freeze-resistant
- Hardened seat and disc
- Weldable

List of Materials	
Name of Part	Material
	<b>CD-72S/SL</b>
Body	Dual certified ASTM
Cap	A105N / A350 LF2 Cl.1
Disc	ASTM A276 Gr. 420
Strainer Screen	30 x 30 Mesh T-304 Stainless Steel
Screen Retainer	A105N / LF2
Blowdown Plug	T316 stainless steel

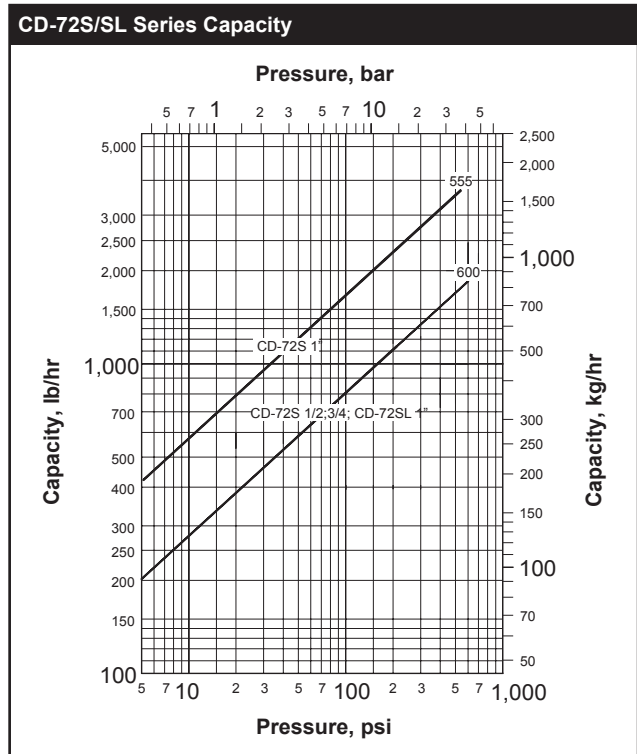
Dimensions and Weights				
Model No.	CD-72S Forged		CD-72SL Forged	
	in	mm	in	mm
	1/2, 3/4	15, 20	1	25
"A"	1-1/2	38	1-7/8	48
"B" Height	4-7/16	111	4-5/8	118
"C" Length	3-5/8	90	4-7/16	112
"D" Q to top of cap	2	50	2-3/16	55
Weight, lb (kg)	2.3 (1.0)		11 (5.0)	
Maximum Allowable Pressure (vessel design)	1010 psig @ 750°F (70 bar @ 399°C)			
Minimum Operating Pressure	3.5 psig (0.24 bar)			
Maximum Operating Pressure	600 psig @ 486°F (41 bar @ 252°C)			

Dimensions and Weights		
Model No.	CD-72S Forged	
	in	mm
	1	25
"A"	1-14/16	48
"B" Height	4-15/16	126
"C" Length	4-7/16	112
"D" Q to top of cap	2-5/16	59
Weight, lb (kg)	16.5 (7.5)	

Note: For operating parameters, please consult factory.



Series CD-72S/SL



Flange sizes, ratings and face-to-face dimensions are available on request.