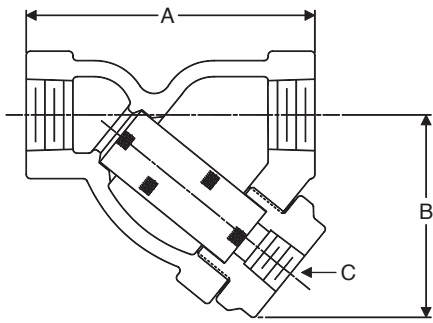


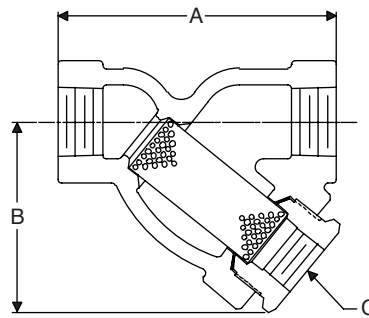


Y-Type Strainers

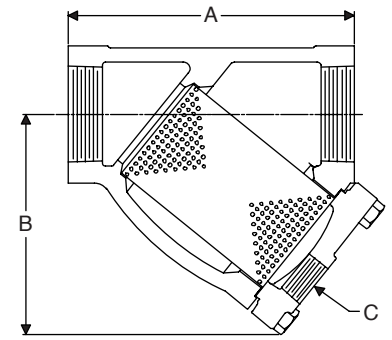
Cast Iron 250 lb Screwed 1/2" - 3"



CA1SC 1/2", 3/4", 1", 1-1/2", 2"



CA1SC 1-1/4"

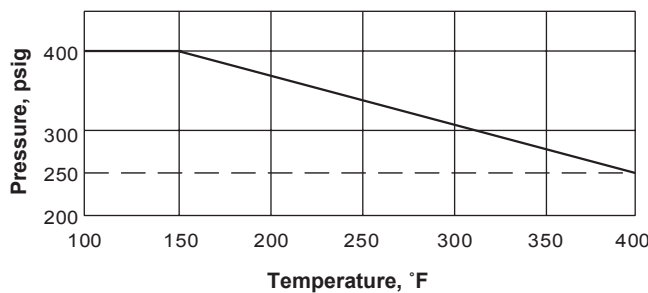


A1SC 2-1/2", 3"

For a fully detailed certified drawing, refer to:
 CA1SC 1/2", 3/4", 1", 1-1/4", 1-1/2", 2"
 A1SC 2-1/2", 3"

CD #1111
 CD #1043

Pressure/Temperature Rating



Materials: 250 lb Screwed 1/2" - 3" (15 - 80 mm)

Connections Size		Body	Standard Screen	Screen Retainer	Gasket	Bolting
in	mm					
1/2, 3/4	15, 20	ASTM A48 Class 30 Cast Iron	304 SS .045" perforated†	ASTM A48 Class 30 Cast Iron	Spiral Wound	N/A
1, 1-1/2, 2	25, 40, 50				Soft Steel	
1-1/4	32		304 SS .045" perforated†		Non-asbestos	Cap Screws ASTM A193 G r. B7
2-1/2, 3	65, 80					

†NOTE: Other screen materials available.

Physical Data: 250 lb Screwed 1/2" - 3" (15 - 80 mm)

Size		Ordering Code, Standard Screen	Weight		Dimensions					Maximum Pressure				Screen Retainer Type	Connections	
					A		B		C		Saturated Steam		150°F (66°C) non-shock			
in	mm	lb	kg	in	mm	in	mm	in	mm	psig	bar	psig	bar			
1/2	15	CA1SC	3	1.4	4-1/4	108	3	76	3/8	9.5	250	17	400	28	Threaded	ANSI B1.20.1 Screwed
3/4	20															
1	25															
1-1/4	32															
1-1/2	40															
2	50	A1SC	15	6.8	7-1/2	191	5-7/16	138	3/4	20	250	17	400	28	Bolted	
2-1/2	65															
3	80		21	9.5	10-1/2	267	8	203	1-1/4	32						





Cast Y-Type Strainers



Armstrong Cast Y-Type Strainers are designed to ASME B 16.34. The strainer bodies are produced with a superior wall thickness for corrosion allowance. Standard strainers are equipped with screens for the average service of most mediums (steam, gas, air, oil, chemicals, etc.).

The large screen open area ensures an efficient filtering action with a low pressure drop. Filtering area to inlet area ratio is larger than 3 to 1. Screens area manufactured with perforated plate in the materials and with perforation specified in the relevant tables. Different filtrations or materials are available on request.

Materials

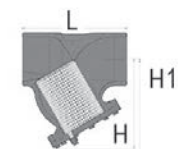
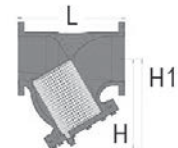
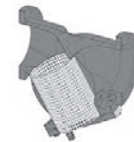
Body: ASTM A216WCB; ASTM A351 CF8M
 Cover: ASTM A 105N; ASTM A 182 F316
 Screen (Spare): SS 304; SS316
 Gasket (Spare): SW 316 / Graphite; SW 316 / Graphite
 Drain: ASTM A 105N; ASTM A 182 F316
 Bolts: ASTM A 193B7; ASTM A 193 B8
 Nuts: ASTM A 1942H; ASTM A 194 GR8

Connections

Buttweld: ANSI B 16.25
 Flanged: ANSI B 16.5

Bolted cover 2" only (bolting mat. B7/2H or B8/GR8).

Size (inches)	ANSI 150#				ANSI 300#				ANSI 600#				
	L	H	H1	Kg	L	H	H1	Kg	L	LrTJ	H	H1	Kg
1/2"	169	135	170		175	140	170		188	188	140	170	13
3/4"	172	135	170	9,5	178	140	170	12	191	191	140	170	14
1"	197	150	195	10,5	203	160	195	14	216	216	160	195	18
1 1/2"	219	185	245	12	229	185	245	16	241	241	185	245	28
2"	203	210	300	14	267	215	300	19	292	295	230	310	25
2 1/2"	216	220	250	20									
3"	241	255	355	26	318	260	365	34	356	359	300	390	48
4"	292	295	420	39	356	315	437	61	432	435	360	480	93
6"	406	395	570	70	445	440	625	104	559	562	485	670	139
8"	495	485	700	133	559	485	675	200	660	663	575	780	320
10"	622	600	900	218	622	635	930	210	787	790	705	990	590
12"	699	700	1060	340	711	730	1075	410	838	841	720	1200	700
14"	788	770	1200	350	838	805	1200	670	889	892	865	1420	770
16"	914	910	1385	640	864	920	1350	780	991	994	1180	1520	1140
18"	978	1030	1600	700	978	1025	1400	863					
20"	978	1095	1750	895	1016	1140	1700	1125					
24"	1295	1310	2030	1370	1346	1380	2095	1625					



Size (inches)	900#				1500#				2500#			
	L	LrTJ	H	H1	L	LrTJ	H	H1	L RF	LrTJ	H	H1
1/2"	264	-	165	250	264	-	165	250	264	-	165	250
3/4"	273	-	175	255	273	-	175	255	273	-	175	255
1"	308	-	180	270	254	254	210	280	308	308	215	280
1 1/2"	305	-	230	340	305	305	250	320	387	387	285	390
2"	368	371	250	400	368	371	320	420	451	454	340	430
3"	381	384	350	475	470	473	360	470	368	360	400	475
4"	457	460	430	570	546	546	390	630	457	410	620	480
6"	610	613	510	670	705	711	575	730				
8"	737	740	650	885	832	842	730	950				
10"	838	841	765	1070								
12"	965	968	892	1250								
14"	1029	1038	895	1300								
16"	1130	1140	960	1400								

Installation Instructions

- All strainers should be installed as close as possible to the machinery which they are being installed to protect.
- It is important to ensure that the strainer is installed with the flow following the same direction as the flow direction arrow cast onto the strainer body.
- For mounting in horizontally or inclined pipelines, ensure that the screen housing is always mounted below the pipeline.
- Y-type strainers should never be installed in vertical pipelines in the upward flow condition.