



DOT-7000 Series Dual Orifice Trap

For Pressures up to 575 psig (40 barg)...Capacities to 1,730 lb/hr (785 kg/hr)



Description

Series DOT-7000 is ideally intended for use on shipboard steam systems where steam is created from demineralized or purified water and does not contain the minerals and impurities typically found in land based steam systems.

Series DOT-7000 Series is intended for condensate drain applications seeing constant steam supply and return pressures, and condensate loads which are not variable.

Series DOT-7000 is installed in conjunction with a 2-bolt connector.

Maximum operating conditions

Maximum allowable pressure

All Models: 650 psig @ 600°F (45 barg @ 315°C)

Maximum operating pressure

All Models: 575 psig (40 barg)

Connections

Screwed NPT and BSPT

Socketweld

Flanged (consult factory)

Materials

Cap & body: ASTM A351 Gr. CF8M

Integral screen: SS T316



How to Order

Specify:

- Model Number

Type of 360° connector

For a fully detailed certified drawing, refer to:

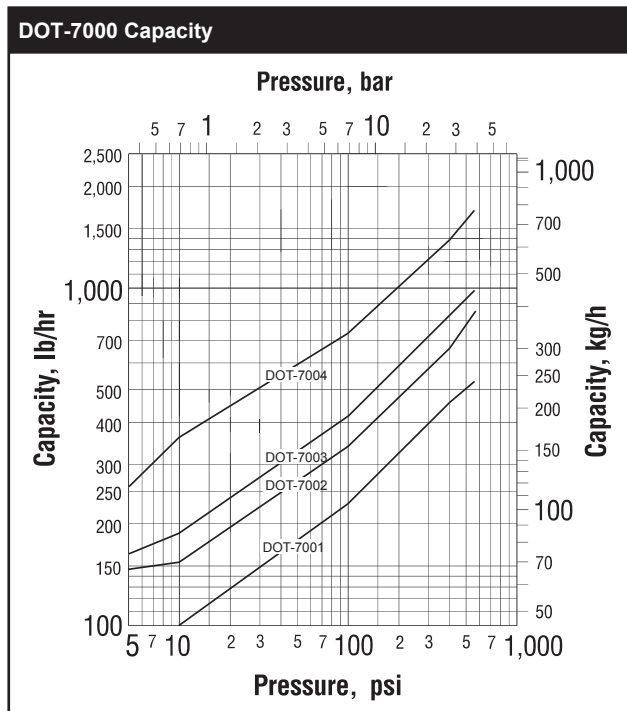
DOT 7000 Series with Standard Connector CD#2801

DOT 7000 Series with IS-2 Connector CD#2804

DOT-7000 Series with TVS 4000 CD#2803

360° Connector Styles

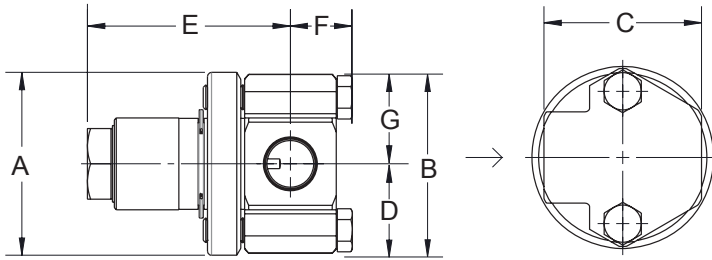
- Standard connector
- IS-2 connector with integral strainer
- TVS-4000 2-bolt connector block



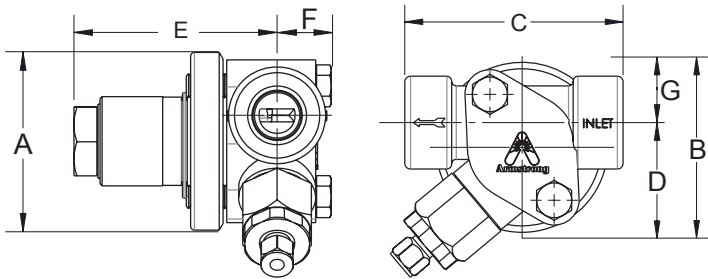


DOT-7000 Series Dual Orifice Trap

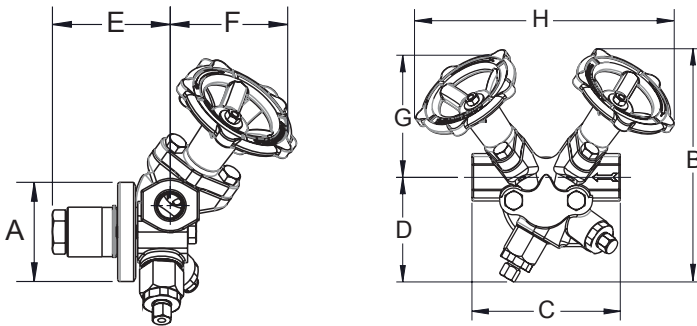
For Pressures up to 575 psig (40 barg)...Capacities to 1,730 lb/hr (785 kg/hr)



DOT-7000 Series With Standard Connector



DOT-7000 Series With IS2 Connector



DOT-7000 Series With TVS 4000

DOT-7000 Series Traps

Model No.	DOT-7000							
	Standard Connector		IS-2 Connector With Integral Strainer				TVS 4000 Connector	
Pipe Connections	in	mm	in	mm	in	mm	in	mm
"A" Trap Diameter	2-3/4	70	2-3/4	70	2-3/4	70	2-3/4	70
"B" Total Height	2-3/4	70	3-1/2	89	3-1/2	89	7-13/16	198
"C" Face-to-Face	2-3/8	60	3-1/2	89	4	101	4-3/4	120
"D" Connection \varnothing to Bottom	1-3/8	46	2-5/8	67	2-5/8	67	3-1/4	83
"E" Connection \varnothing to Outside of Trap	3-1/16	78	3-1/8	79	3-5/16	84	3-1/2	89
"F" Connection \varnothing to Front of Connector	13/16	20	7/8	22	7/8	22	3-7/8	98
"G" Connection \varnothing to Top	1-3/8	46	1	25	1	25	4-1/2	114
"H" Width Across Handwheels (valve open)	—	—	—	—	—	—	8-11/16	221
Test Port Connection	—	—	—	—	—	—	1/4 NPT	6
Trap Only Weight, lb (kg)			1.4 (0.63)					
Trap and Connector Weight, lb (kg)	3.1 (1.4)		3.3 (1.5)				7.9 (3.6)	

